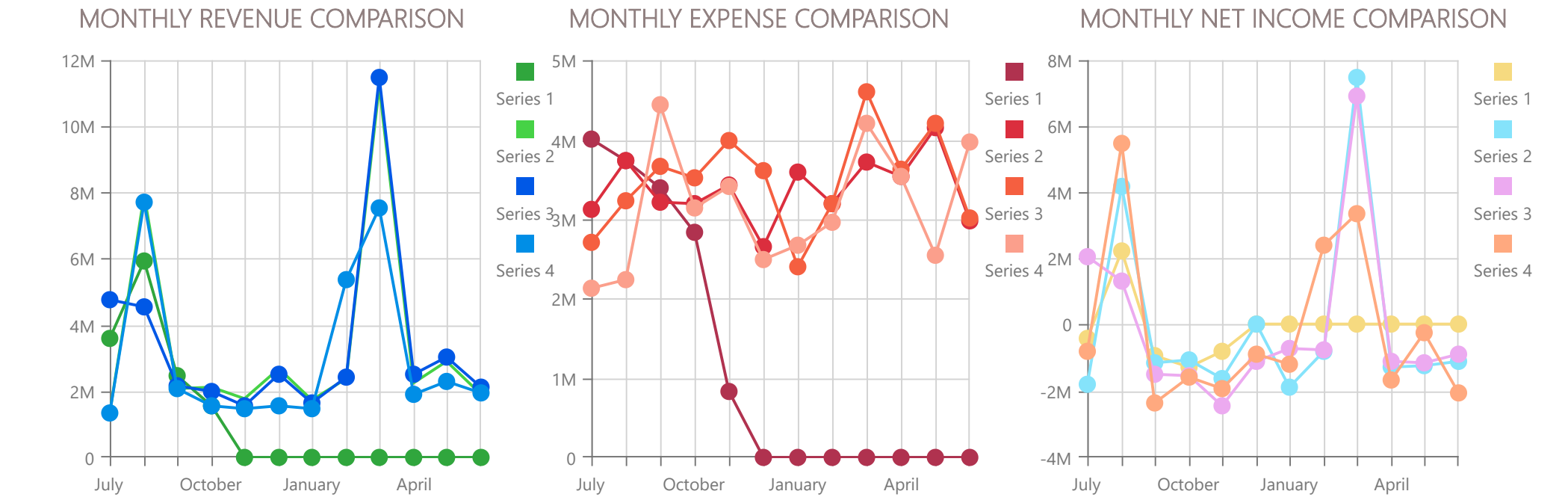
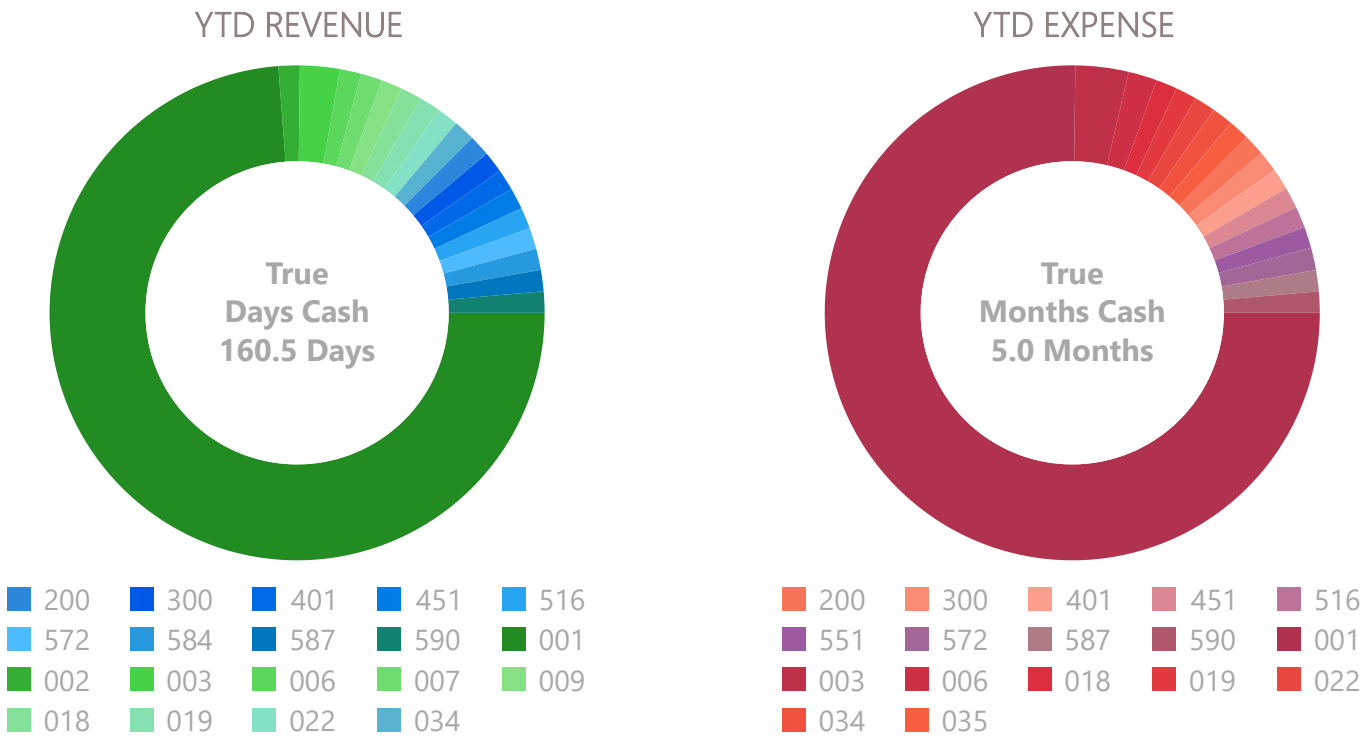


Tiffin City Schools: Dashboard - Printed 11/7/25 9:15 AM

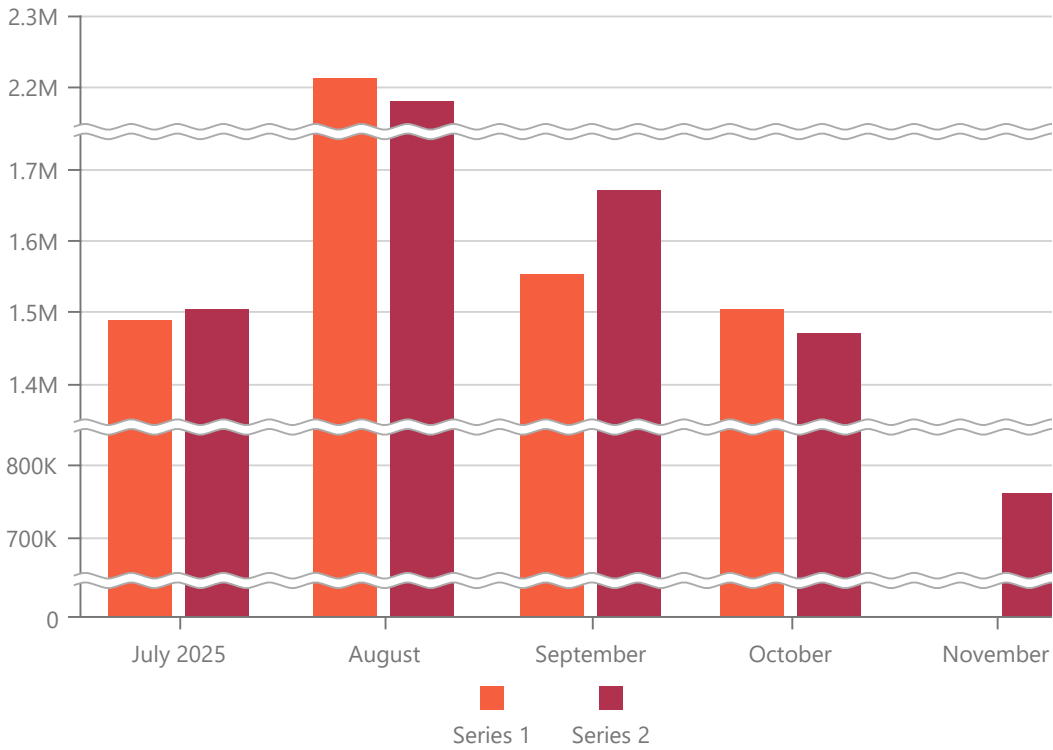
| Name | Current Cash | Encumbrances | Unenc. Cash | Last Ytd Cash | % Chg |
|------------------------|--------------|--------------|--------------|---------------|--------|
| Cash in Bank All Funds | \$19,185,565 | \$6,728,865 | \$12,456,700 | \$20,330,693 | -5.63 |
| General Funds | \$15,200,822 | \$5,297,345 | \$9,903,477 | \$17,557,936 | -13.42 |
| Top 10 Funds | \$19,529,462 | \$6,672,630 | \$12,856,832 | \$21,211,795 | -7.93 |



Top 10 Funds

| Fund | Description | FYTD Cash | LYTD Cash |
|------|--------------------------|------------|------------|
| 001 | GENERAL FUND | 15,200,822 | 17,557,936 |
| 003 | PERMANENT IMPROVE... | 1,959,082 | 1,697,815 |
| 034 | TIFFIN MIDDLE SCHOO... | 1,014,769 | 1,145,414 |
| 035 | SEVERANCE FUND | 492,389 | 0 |
| 300 | TMS LIBRARY | 299,242 | 286,669 |
| 002 | BOND RETIREMENT | 231,852 | 131,705 |
| 018 | SUPPORT FUND CLINT... | 102,470 | 96,341 |
| 006 | FOOD SERVICE FUND | 95,539 | 176,115 |
| 200 | STUDENT COUNCIL - K... | 80,553 | 66,411 |
| 401 | AUX SERV IST YEAR OF ... | 52,744 | 53,389 |

Salaries



MOE Comparison

| Current YTD | Last YTD | \$ Diff | % Diff | LY Total |
|-------------|-------------|-----------|--------|-------------|
| \$2,713,958 | \$2,349,460 | \$364,498 | 15.51 | \$9,346,339 |

Stock / Bond Information

| Symbol | Date | Value | Chg \$ | Chg % |
|--------|-----------|---------|--------|-------|
| US10Y | 11/6/2025 | 4.110 | -0.06 | -1.44 |
| CPI | 9/1/2025 | 330.804 | 0.83 | 0.25 |

STAR Ohio Rate as of 11/6/2025

| | |
|---------------------------|----------------|
| Total Shares: | 25.372 Billion |
| Overnight Yield: | 4.12 % |
| Annualized Yield: | 4.20 % |
| Daily Dividend Rate: | 0.0001129780 |
| Average Days to Maturity: | 27.2 days |

Unemployment: Seneca County, OH

