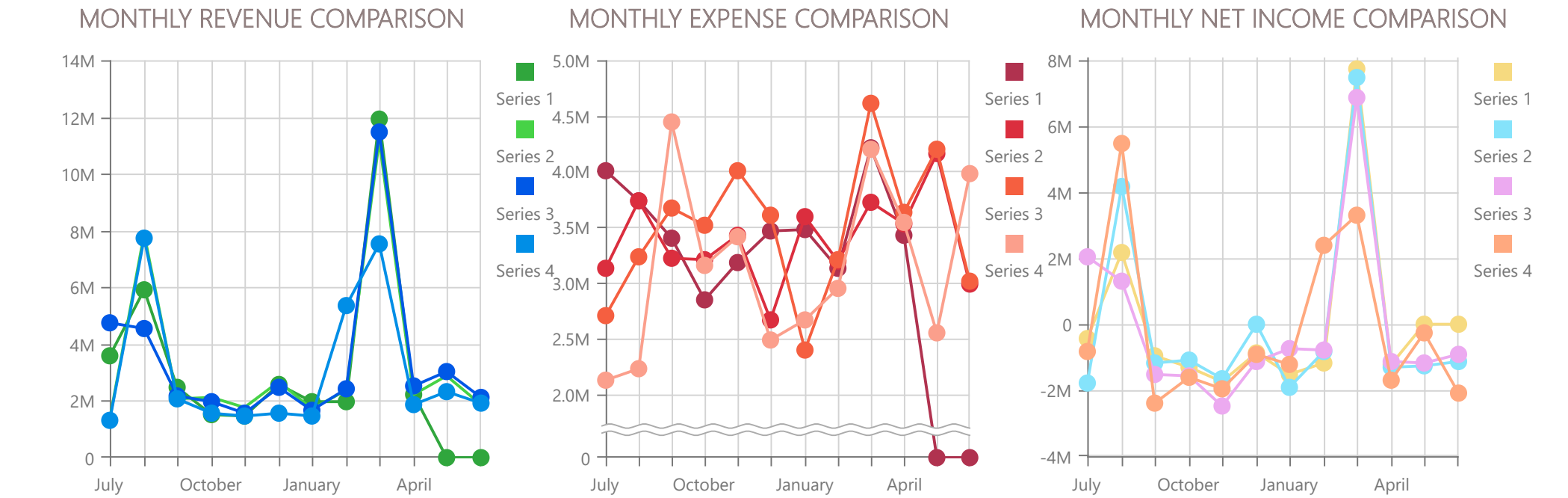
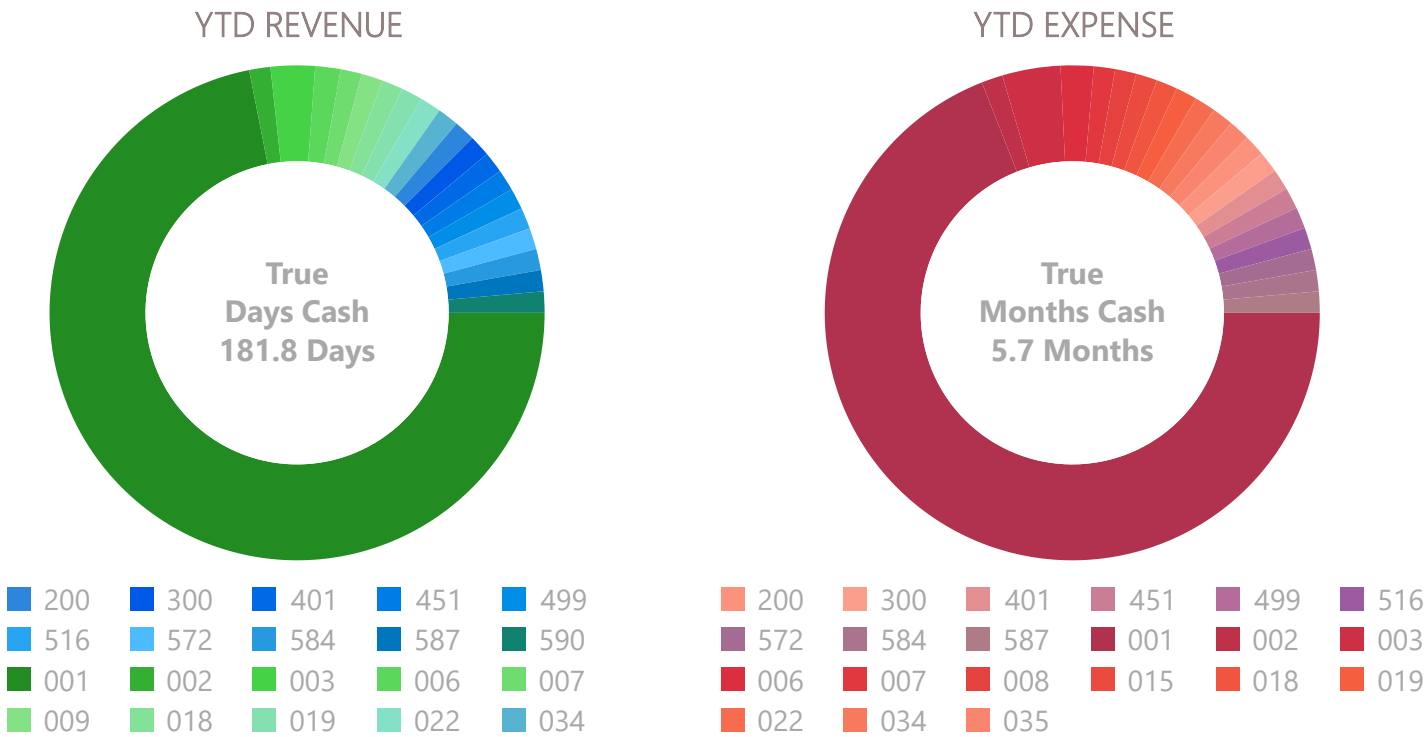


Tiffin City Schools: Dashboard - Printed 5/7/26 2:25 PM

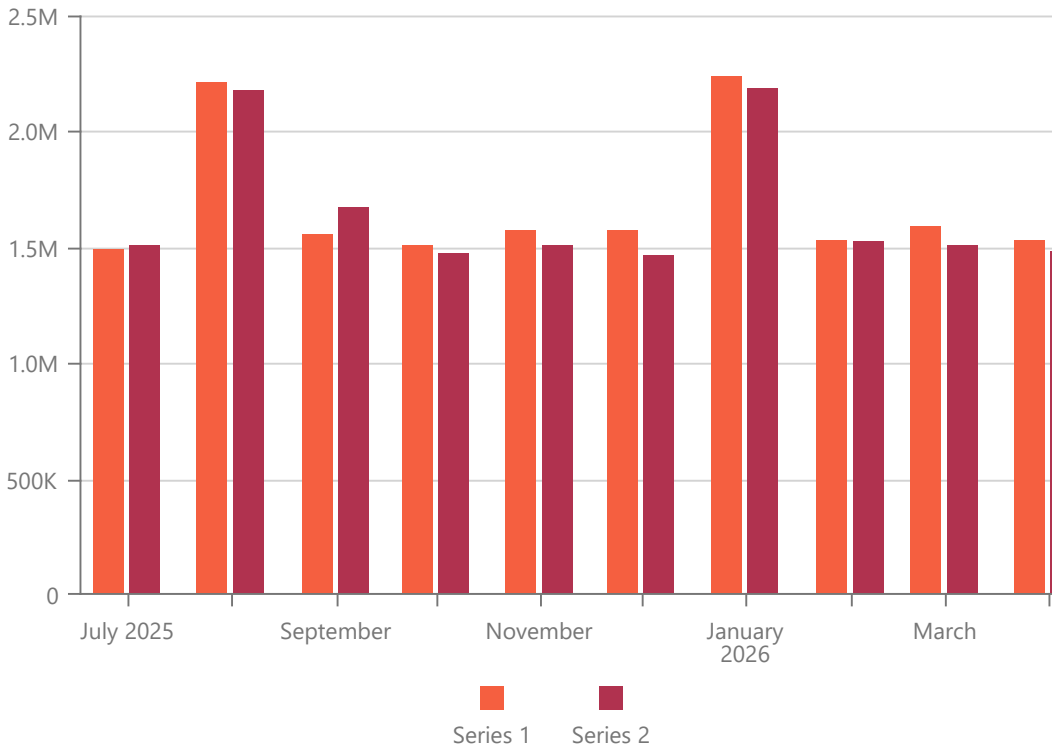
Name	Current Cash	Encumbrances	Unenc. Cash	Last Ytd Cash	% Chg
Cash in Bank All Funds	\$21,290,159	\$2,812,365	\$18,477,794	\$21,548,469	-1.20
General Funds	\$17,259,816	\$2,143,208	\$15,116,608	\$16,508,485	4.55
Top 10 Funds	\$21,320,410	\$2,662,169	\$18,658,241	\$21,227,809	0.44



Top 10 Funds

Fund	Description	FYTD Cash	LYTD Cash
001	GENERAL FUND	17,259,816	16,508,485
003	PERMANENT IMPROVE...	1,734,003	2,164,103
034	TIFFIN MIDDLE SCHOO...	955,343	1,043,622
035	SEVERANCE FUND	450,523	700,000
300	TMS LIBRARY	322,781	311,396
002	BOND RETIREMENT	179,470	227,976
401	AUX SERV IST YEAR OF ...	122,798	127,272
018	SUPPORT FUND CLINT...	120,630	89,025
590	TITLE II-A ITQ FY 07	106,899	-23,961
200	STUDENT COUNCIL - K...	68,147	79,891

Salaries



MOE Comparison

Current YTD	Last YTD	\$ Diff	% Diff	LY Total
\$8,713,027	\$7,825,738	\$887,289	11.34	\$9,346,339

Stock / Bond Information

Symbol	Date	Value	Chg \$	Chg %
US10Y	5/6/2026	4.360	-0.07	-1.58
CPI	3/1/2026	334.391	1.15	0.34

STAR Ohio Rate as of 5/6/2026

Total Shares:	27.580 Billion
Overnight Yield:	3.79 %
Annualized Yield:	3.86 %
Daily Dividend Rate:	0.0001038550
Average Days to Maturity:	47.4 days

Unemployment:

