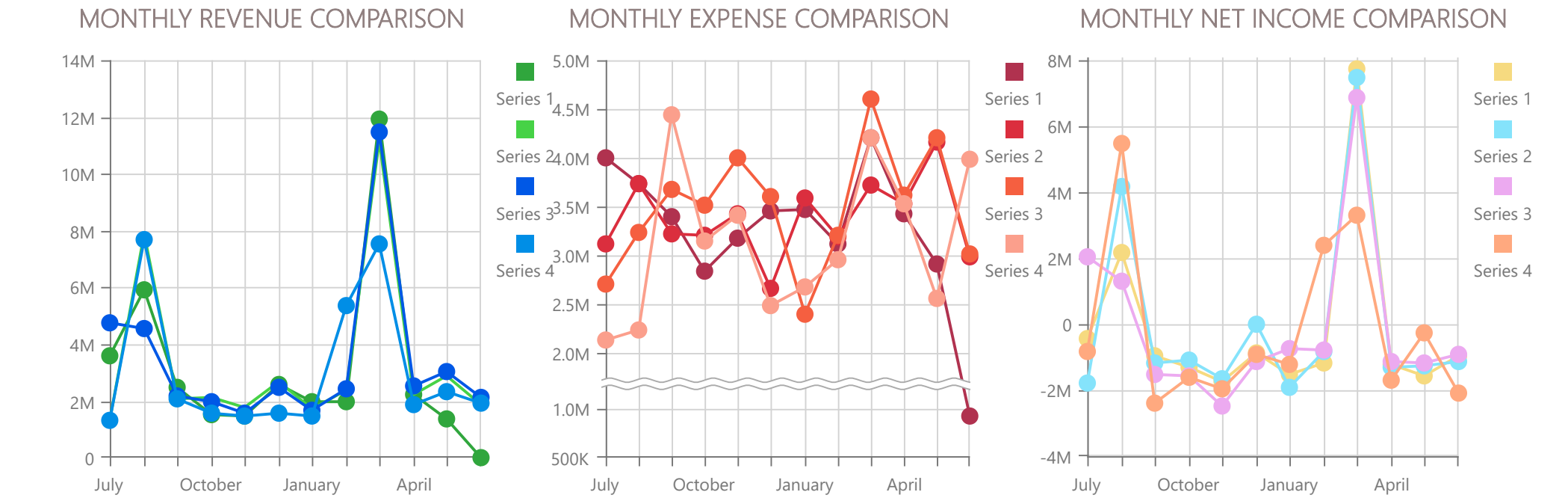
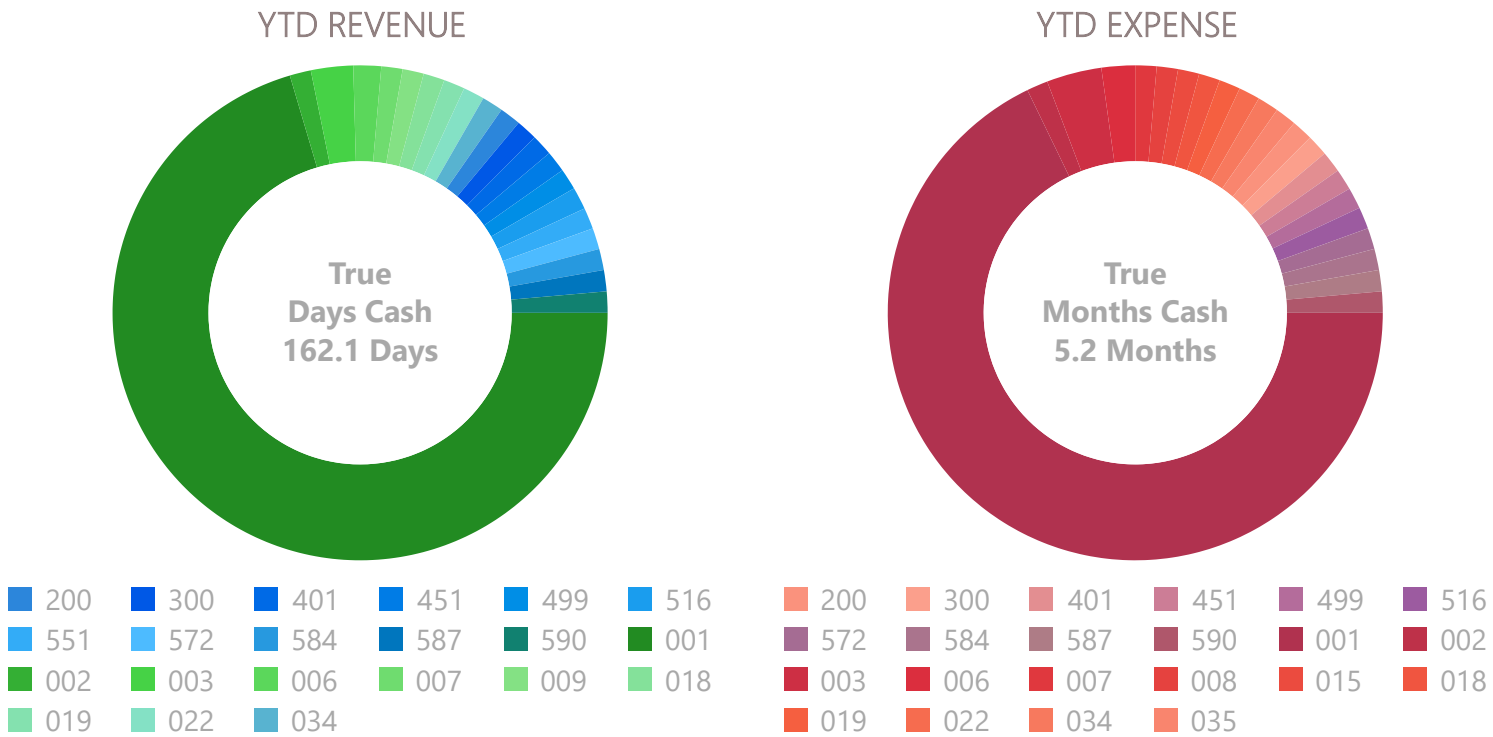


Tiffin City Schools: Dashboard - Printed 6/8/26 9:37 AM

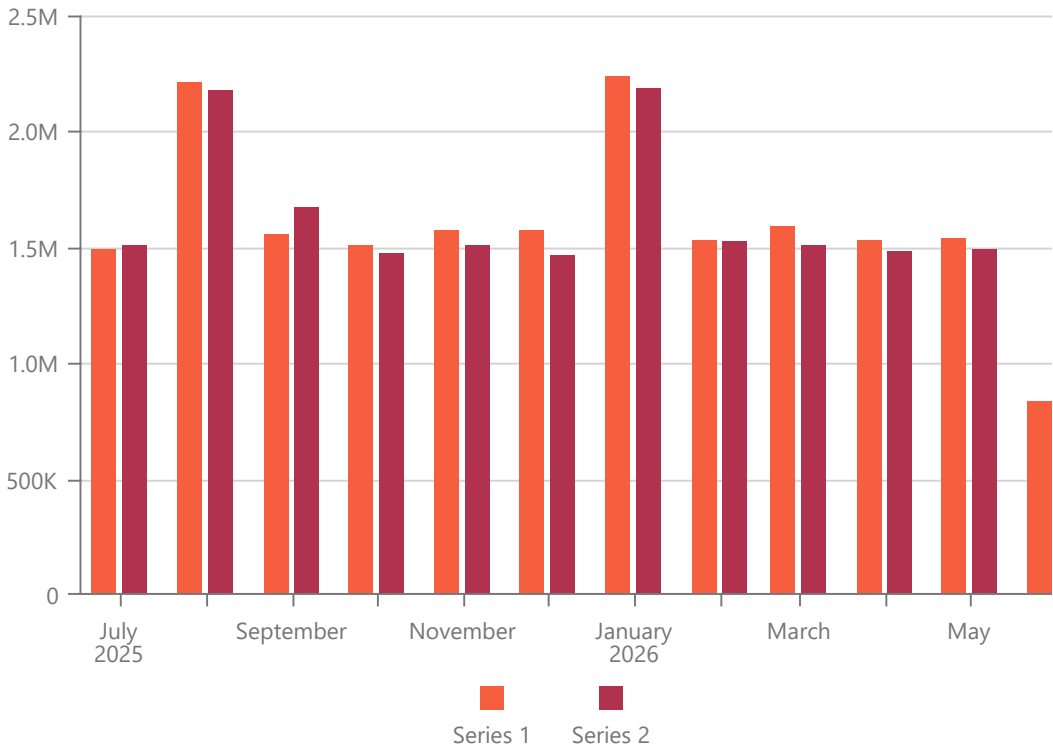
| Name | Current Cash | Encumbrances | Unenc. Cash | Last Ytd Cash | % Chg |
|------------------------|--------------|--------------|--------------|---------------|-------|
| Cash in Bank All Funds | \$18,839,615 | \$2,812,812 | \$16,026,803 | \$20,916,428 | -9.93 |
| General Funds | \$15,180,139 | \$1,815,435 | \$13,364,704 | \$16,293,511 | -6.83 |
| Top 10 Funds | \$19,005,282 | \$2,737,208 | \$16,268,074 | \$21,053,519 | -9.73 |



Top 10 Funds

| Fund | Description | FYTD Cash | LYTD Cash |
|------|--------------------------|------------|------------|
| 001 | GENERAL FUND | 15,180,139 | 16,293,511 |
| 003 | PERMANENT IMPROVE... | 1,636,204 | 2,165,590 |
| 034 | TIFFIN MIDDLE SCHOO... | 934,855 | 1,006,743 |
| 035 | SEVERANCE FUND | 450,523 | 700,000 |
| 300 | TMS LIBRARY | 313,060 | 315,424 |
| 002 | BOND RETIREMENT | 176,590 | 227,960 |
| 018 | SUPPORT FUND CLINT... | 122,763 | 104,641 |
| 200 | STUDENT COUNCIL - K... | 81,949 | 74,370 |
| 401 | AUX SERV IST YEAR OF ... | 72,017 | 83,003 |
| 019 | LOCAL GRANTS | 37,182 | 82,277 |

Salaries



MOE Comparison

| Current YTD | Last YTD | \$ Diff | % Diff | LY Total |
|-------------|-------------|-----------|--------|-------------|
| \$9,520,844 | \$8,854,258 | \$666,586 | 7.53 | \$9,346,339 |

Stock / Bond Information

| Symbol | Date | Value | Chg \$ | Chg % |
|--------|----------|---------|--------|-------|
| US10Y | 6/5/2026 | 4.550 | 0.08 | 1.79 |
| CPI | 4/1/2026 | 335.803 | 1.41 | 0.42 |

STAR Ohio Rate as of 6/5/2026

| | |
|---------------------------|----------------|
| Total Shares: | 26.080 Billion |
| Overnight Yield: | 3.81 % |
| Annualized Yield: | 3.88 % |
| Daily Dividend Rate: | 0.0003134310 |
| Average Days to Maturity: | 48.1 days |

Unemployment:

